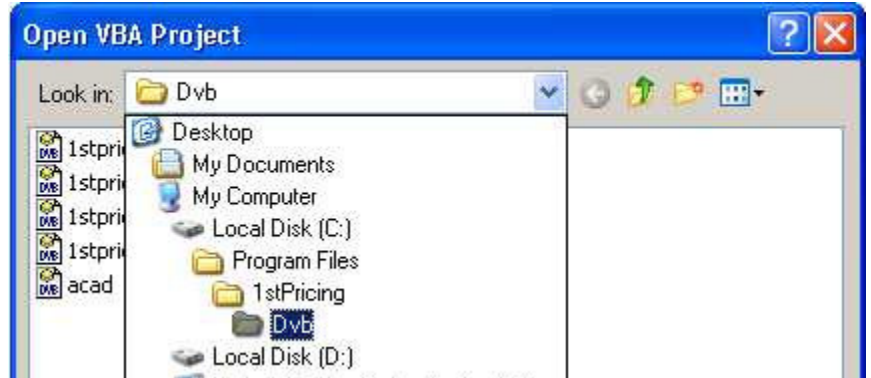
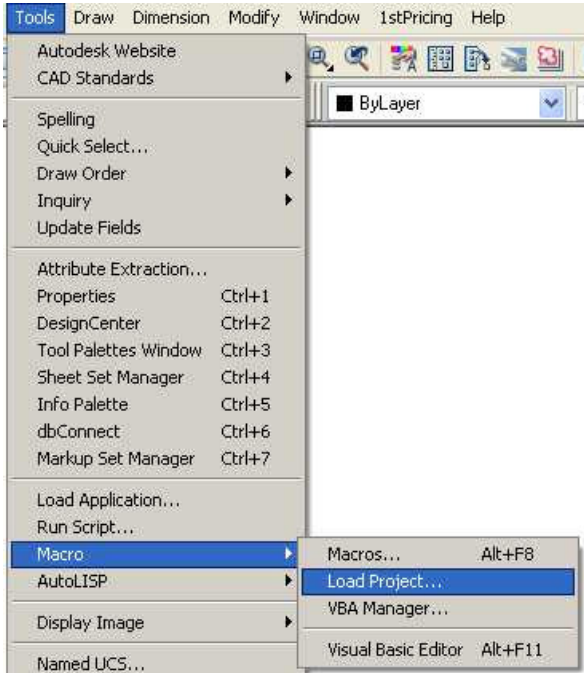


Getting Started with the 1ST Pricing Toolkit for AutoCAD™

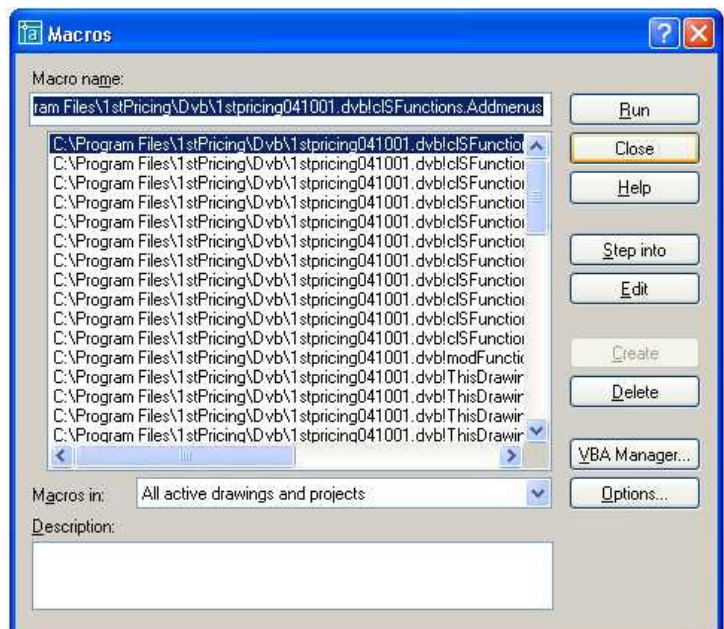
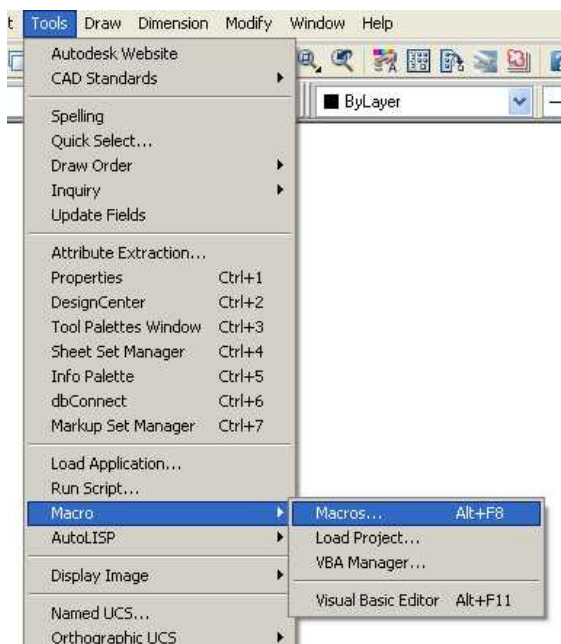
Step 1 - Loading the 1st Pricing Plug-In (One time event)

1. From the AutoCAD™ menu, Select Tools
2. Select Macro
3. Select Load Project
4. Open VBA Project c:\Program Files\1stpricing\Dvb\1stpricing041001.dvb



Step 2 - Activate the 1st Pricing Menu

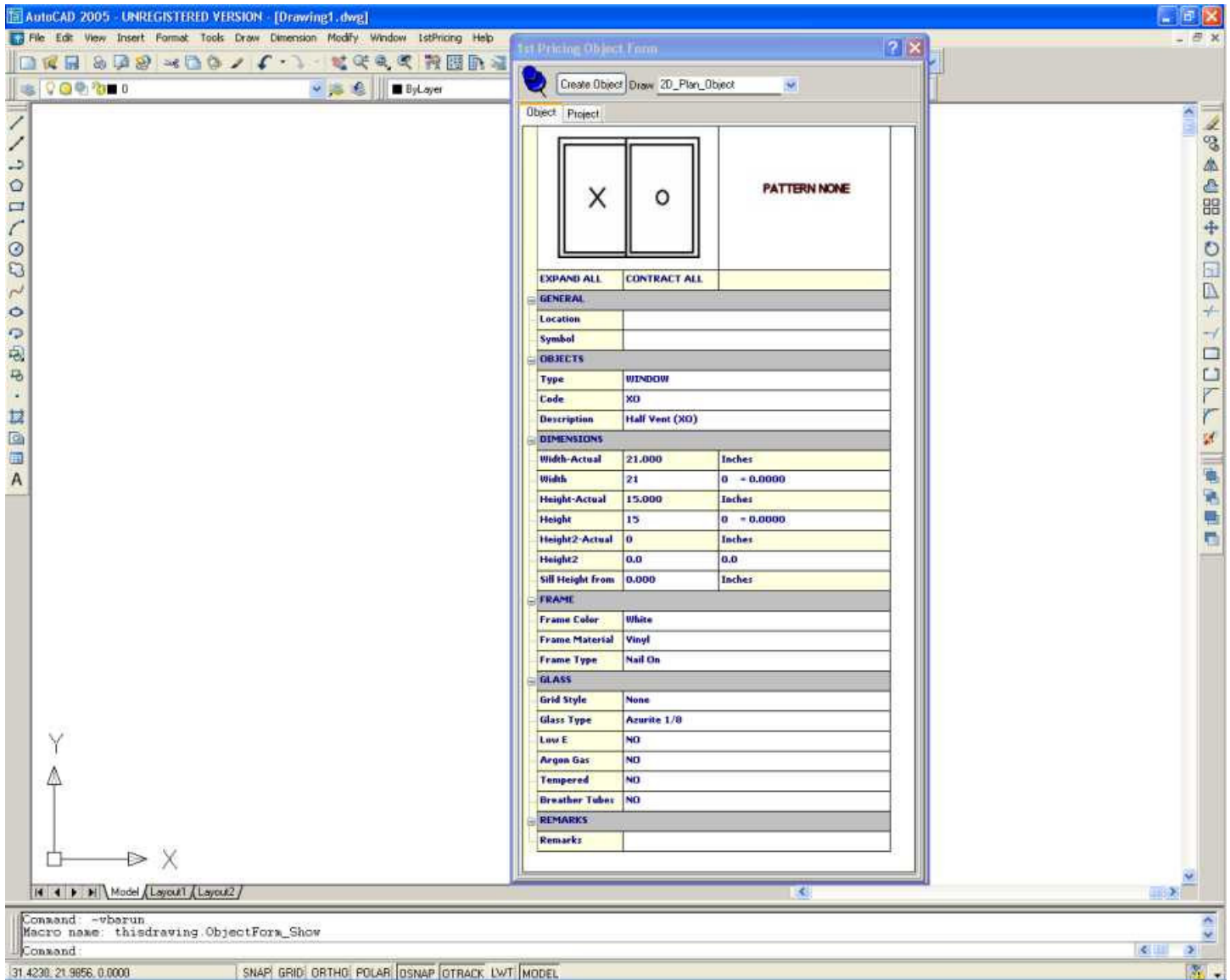
1. From the AutoCAD™ menu, Select Tools
2. Select Macro
3. Select Macros – this opens the Macro Dialog box
4. Close Macro Dialog box without selecting a Macro – this will activate the 1st Pricing Menu



Step 3 – Open the Object Form (Window & Door Palette)

1. Select Object Form Show
2. Object Form appears. Be patient it takes some time to appear.

1stPricing	Help
Object Form Show	
Display Object Attributes	
Create, Insert, Update Schedule	
Create Elevation View	
Reset 1st Pricing ReferenceID	
Display 1st Pricing ReferenceID	
Set 1st Pricing Drawing Zipcode	
Display 1st Pricing Drawing Zipcode	
1st Pricing Version	



Step 4 – Insert a Patio Door - Select values in the following order:

1. Select Draw Pulldown: 2d_Plan_Object, or 2D_Front_Elevation_Object (Note : 2D_Plan_Object creates 2d Plan block , 2D-Front_Elevation_Object creates 2D Elevation Block.)
2. Select Type : Window
3. Select Code or Description 1PANINL
4. Select window size: height, and width
5. Select Other parameters: Frame type, material etc.

Optional Codes:

6. Enter Location : Bedroom 1, living room, etc.
7. Enter Symbol Code : A, A1, B, etc. (Any symbol code you want to use)

Step 5 – Insert a Window - Select values in the following order:

1. Select Draw Pulldown: 2d_Plan_Object, or 2D_Front_Elevation_Object (Note : 2D_Plan_Object creates 2d Plan block , 2D-Front_Elevation_Object creates 2D Elevation Block.)
2. Select Type : Window
3. Select Code or Description XO
4. Select window size: height, and width
5. Select Other parameters : Frame type, material etc.

Optional Codes:

6. Enter Location : Bedroom 1, living room, etc.
7. Enter Symbol Code : A, A1, B, etc. (Any symbol code you want to use)

Step 6 - Creating a Schedule

1. From the 1st Pricing menu, Select Create, Insert, Update Schedule
2. When schedule information has been created, a schedule block will be displayed for you to select the insert point. You can scale the schedule to any size you want.

Note: Multiple schedules are created at one time. One for each type (ie. windows, door-interior, doors-exterior, skylights, and glass-block).

The screenshot shows the 'Est Pricing Object Form' window. At the top, there are buttons for 'Create Object' and 'Draw' with a dropdown menu set to '2D_Plan_Object' and a red '1' next to it. Below this, there are tabs for 'Object' and 'Project'. The main area shows a window symbol with an 'X' and an 'O' and the text 'PATTERN NONE'. Below the symbol are buttons for 'EXPAND ALL' and 'CONTRACT ALL'. The form is divided into several sections:

- GENERAL**: Location (6), Symbol (7)
- OBJECTS**: Type (WINDOW 2), Code (XO 3), Description (Half Vent (XO))
- DIMENSIONS**: Width-Actual (21.000), Width (21 4), Height-Actual (15.000), Height (15 4), Height2-Actual (0), Height2 (0.0), Sill Height from (0.000)
- FRAME**: Frame Color (White), Frame Material (Vinyl), Frame Type (Nail On 5)
- GLASS**: Grid Style (None), Glass Type (Azurite 1/8 5), Low E (NO), Argon Gas (NO), Tempered (NO), Breather Tubes (NO)
- REMARKS**: Remarks